

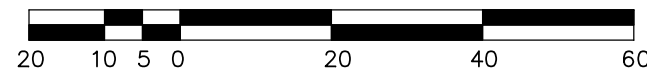
SUBDIVISION PLAN OF PART OF LOT 1, SECTION 9, RANGE 6, CEDAR DISTRICT, PLAN 24395

PLAN EPP14109

BCGS 92G.002

THE INTENDED PLOT SIZE OF THIS PLAN IS
560 mm IN WIDTH BY 432 mm IN HEIGHT (C-SIZE)
WHEN PLOTTED AT A SCALE OF 1:1000

SCALE 1:1000



ALL DISTANCES ARE IN METRES UNLESS OTHERWISE NOTED

LEGEND

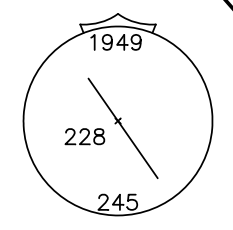
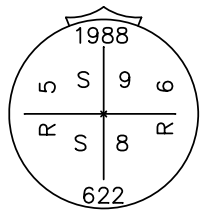
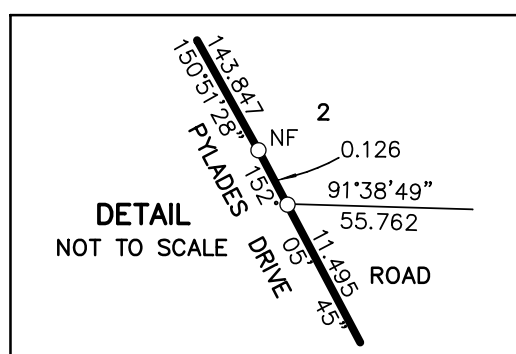
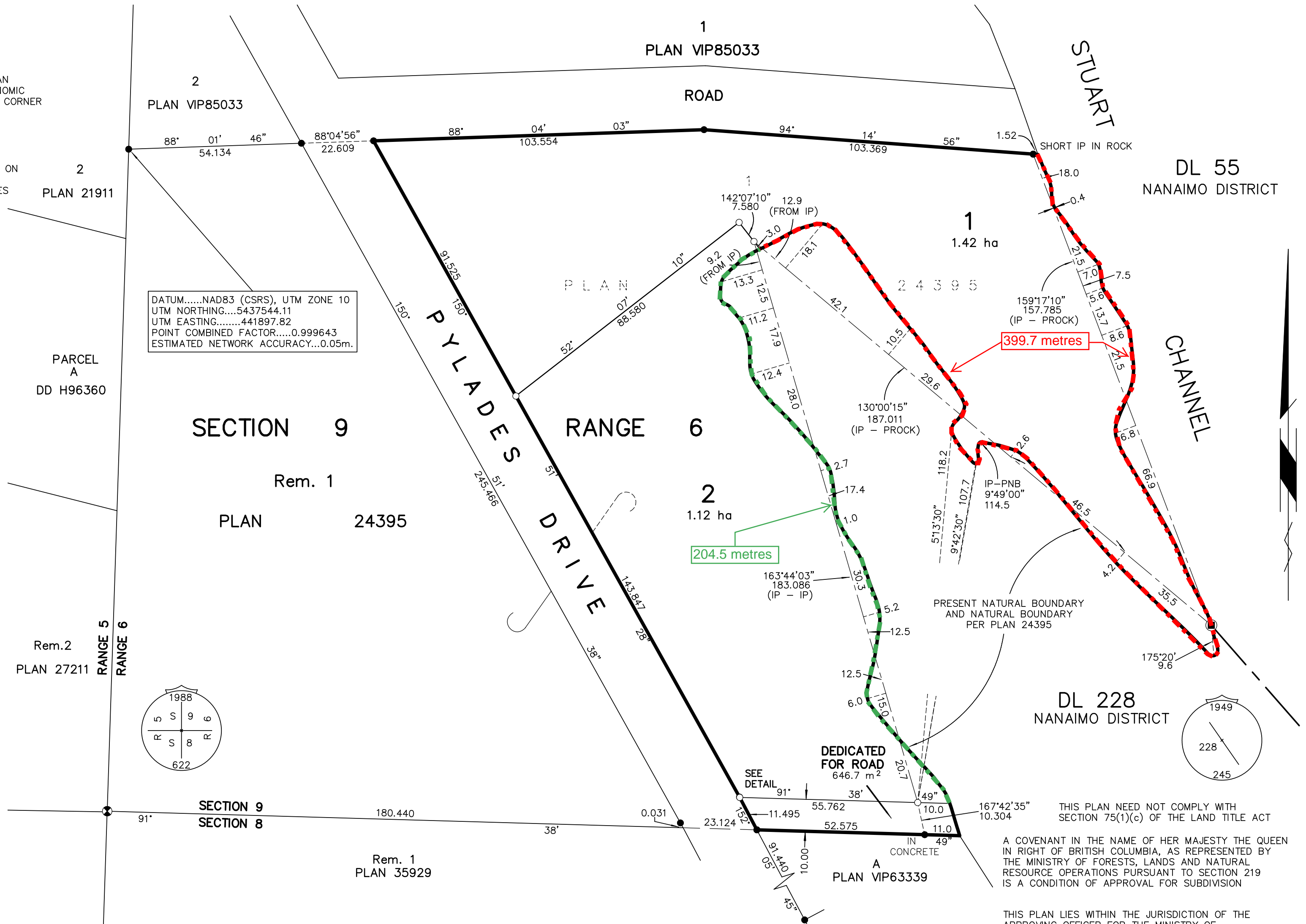
GRID BEARINGS ARE DERIVED FROM DIFFERENTIAL CARRIER PHASE GPS OBSERVATIONS AND ARE REFERRED TO THE CENTRAL MERIDIAN OF UTM ZONE 10 (123° W. LONGITUDE). TO OBTAIN LOCAL ASTRONOMIC BEARINGS REFERRED TO THE MERIDIAN THROUGH THE NORTHWEST CORNER OF REMAINDER LOT 1, PLAN 24395, SUBTRACT 0° 36' 05".

THE UTM COORDINATES AND ESTIMATED NETWORK HORIZONTAL ACCURACY ARE DERIVED FROM GPS DUAL FREQUENCY BASELINE TIES TO CANADIAN ACTIVE CONTROL STA. 'NANO', GCM 816868

THIS PLAN SHOWS HORIZONTAL GROUND-LEVEL DISTANCES BASED ON A MEAN ELLIPSOIDAL ELEVATION OF -15.25 METRES. TO COMPUTE GRID DISTANCES, MULTIPLY GROUND-LEVEL DISTANCES BY THE MEAN COMBINED FACTOR OF 0.99964386

- DENOTES STANDARD IRON POST FOUND
- DENOTES STANDARD IRON POST SET
- ⊙ DENOTES STANDARD CAPPED POST FOUND
- DENOTES STANDARD ROCK POST FOUND

DATUM.....NAD83 (CSRS), UTM ZONE 10
UTM NORTHING.....5437544.11
UTM EASTING.....441897.82
POINT COMBINED FACTOR.....0.999643
ESTIMATED NETWORK ACCURACY...0.05m.



THIS PLAN NEED NOT COMPLY WITH SECTION 75(1)(c) OF THE LAND TITLE ACT

A COVENANT IN THE NAME OF HER MAJESTY THE QUEEN IN RIGHT OF BRITISH COLUMBIA, AS REPRESENTED BY THE MINISTRY OF FORESTS, LANDS AND NATURAL RESOURCE OPERATIONS PURSUANT TO SECTION 219 IS A CONDITION OF APPROVAL FOR SUBDIVISION

THIS PLAN LIES WITHIN THE JURISDICTION OF THE APPROVING OFFICER FOR THE MINISTRY OF TRANSPORTATION AND INFRASTRUCTURE

THIS PLAN LIES WITHIN THE REGIONAL DISTRICT OF NANAIMO
THE FIELD SURVEY REPRESENTED BY THIS PLAN WAS COMPLETED BY MICHAEL JAMES TAYLOR, BCLS, CLS ON THE 19th DAY OF JULY, 2011.